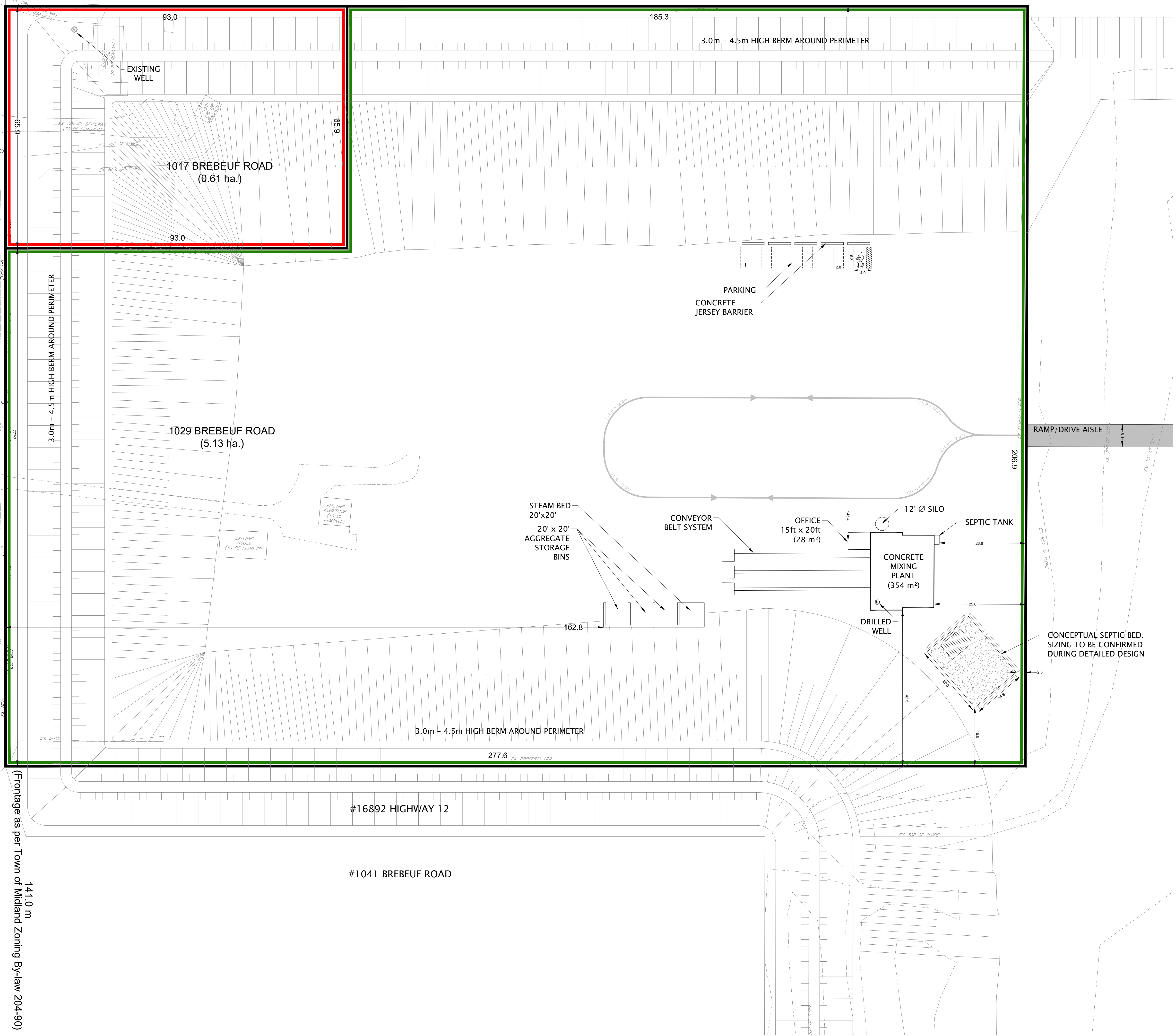


## Site Plan 1029 & 1017 Brebeuf Road Town of Midland, County of Simcoe 2024



**SITE PLAN STATISTICS**  
 1017 Brebeuf Road - 0.61 ha. █  
 1029 Brebeuf Road - 5.13 ha. █  
 Total Land Holdings (Site Plan Area) - 5.74 ha. █

Proposed Industrial Zone (M2)	REQUIRED	PROPOSED
Lot Area - (Minimum)	2.0 ha.	5.13 ha.
Lot Frontage - (Minimum)	60.0 m	141.0 m
Lot Coverage - (Maximum)	60 % / 3.078 ha.	0.01 % / 0.03 ha.
Required Yards:		
Front Yard (Minimum)	7.5 m	162.8 m
Rear Yard (Minimum)	8.8 m	23.6 m
Interior Side Yard (Minimum)	6.0 m	40.4 m
Maximum Building Height		
• Concrete Mixing Plant	11.0 m	14.3 m*
• Silo	11.0 m	20.33 m*

**Parking Calculations:**  
 1 for each 40 m<sup>2</sup> of GFA

Ready Mix (Industrial) (241.5m <sup>2</sup> )/140m <sup>2</sup>	7	12 Spaces**
<b>Total Spaces</b>	<b>7</b>	<b>12 Spaces**</b>

**Barrier Free Parking Calculation**  
 1 Space Required where there are between 11 and 100 parking spaces in accordance with the following ratio, rounding up to the nearest whole number.

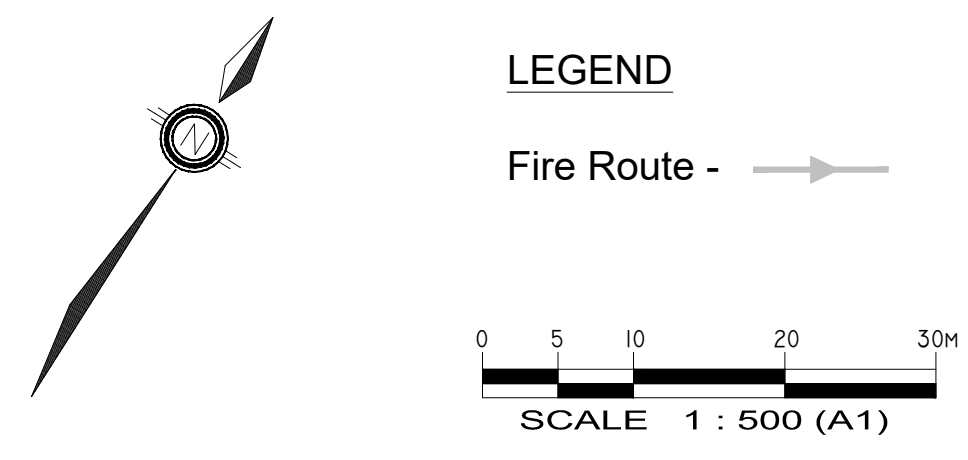
Barrier Free Spaces	1 Spaces	1 Space
---------------------	----------	---------

**\*\*Breakdown of 12 Provided Spaces:**

- Ready Mix (Industrial)
- 11 Typical Spaces (2.8m x 5.8m each)
- 1 Barrier Free Space (3.4m x 5.8m (plus 1.5m aisle each))

12 Spaces

No Loading Spaces Required - < 500 m<sup>2</sup> Building Area  
 \* Denotes that a zoning by-law amendment is required



**JONES**  
CONSULTING GROUP LTD.  
PLANNERS & ENGINEERS  
229 Mapleview Drive East, Unit 1, Barrie, Ontario, L4N 0W5  
Phone: 705-734-2538  
www.jonesconsulting.com

Date Issued:	JULY 11, 2024	Project No.:	SAR-23058
Checked By:	RD & AH	Drawing Name:	
Drawn By:	m.c.r.		SAR-23058-PSP-11.dwg