



Cabinet side view

- 2" X 2" X 1/4" Aluminum Angle (Inside Cabinet)
- 10-118R Filler
- RT 200 Retainer
- 2' X 3' Service Door
- Formed Face
- 4" x 4" x .250" Clip Top Of Cabinet
- Electrical Raceway

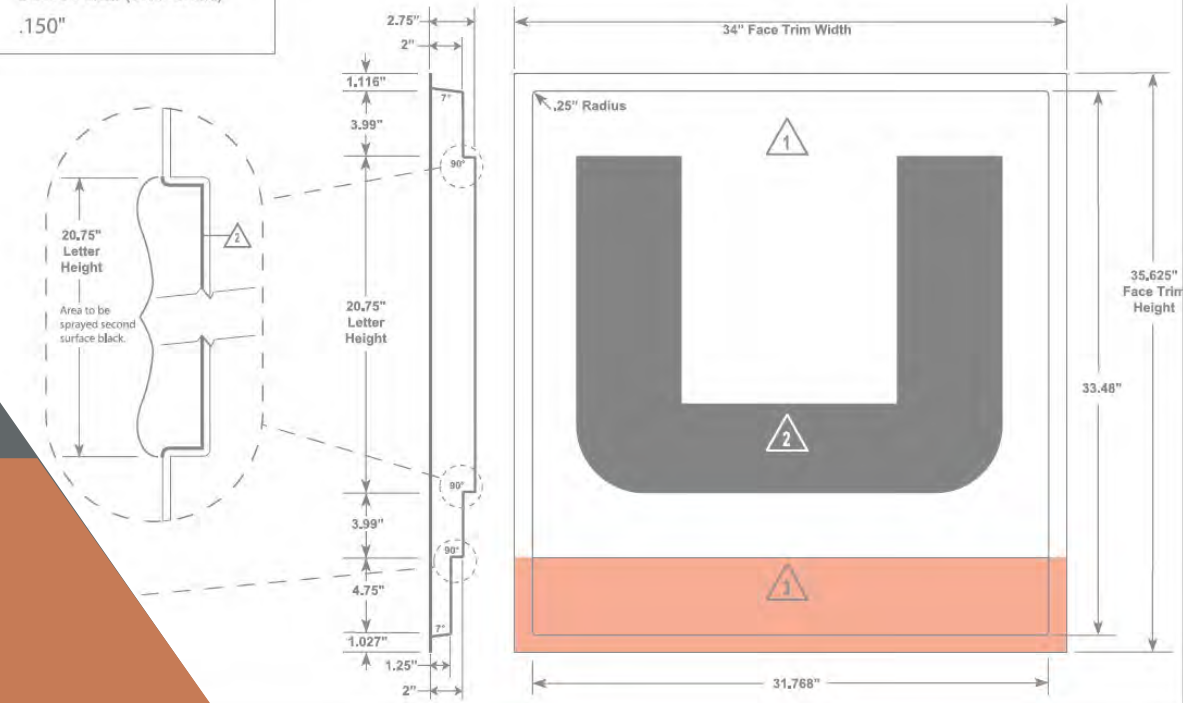
Face Detail n.t.s.

<p>1 "Background"</p> <p>Color: Spray second surface L-403 White Lacryl, by Spraylat.</p> <p>Translucent White</p>	<p>2 "Letter"</p> <p>Color: Spray second surface L-480 Black Lacryl by Spraylat.</p> <p>Black</p>	<p>3 "Orange Bar"</p> <p>Color: Spray second surface L-422 Poppy Orange Lacryl by Spraylat.</p> <p>Translucent Orange</p>
--	---	---

Material(s) Specifications - Sign Face

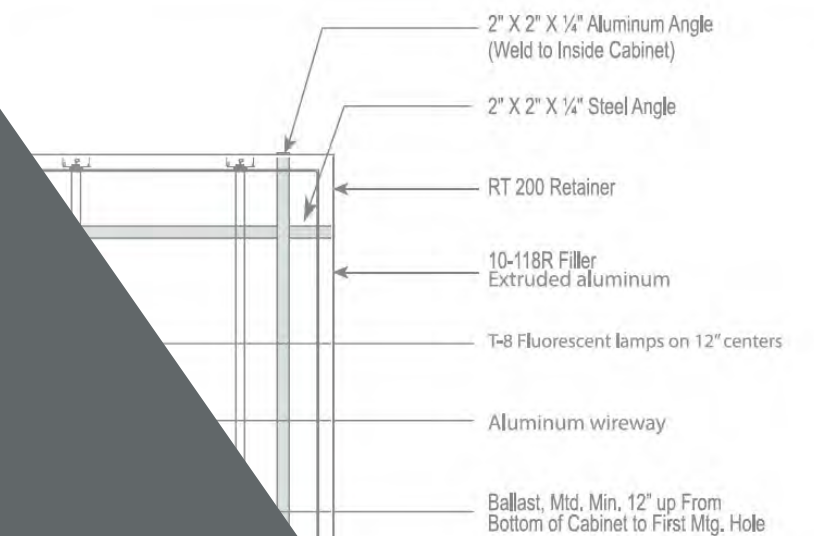
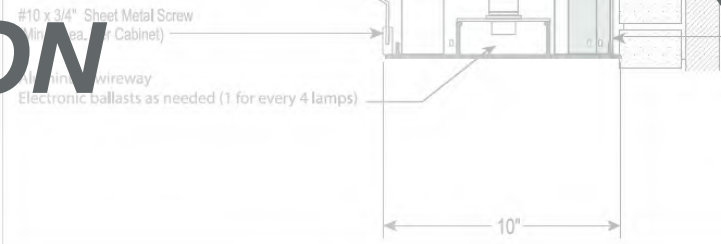
Material: G.E. Lexan® SGC100 Clear (Solar Grade)

Typ. Trade: .150"

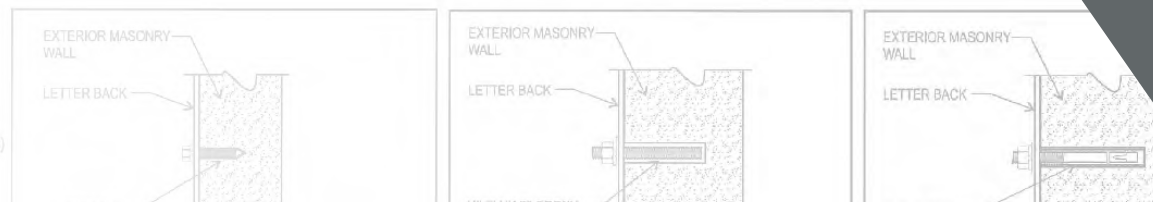


SIGNAGE PROPOSAL

MIDLAND, ON



Connection Details n.t.s.



2727 N. CENTRAL AVENUE
PHOENIX, ARIZONA 85004
P: 602.263.6841



of Midland
Midland, ON
(841076)

Signage Proposal

SHEET 01

©2024 ALL RIGHTS RESERVED 2024-05-28



A&M ASSOCIATES, INC.
2727 N. CENTRAL AVENUE
PHOENIX, ARIZONA 85004
P: 602.263.6841



Southeast Rendering

SHEET 02

©2024 ALL RIGHTS RESERVED 2024-05-28



VERTICAL OFFSETS CREATE A PATTERN OF LIGHT, SHADOW, AND LYRICAL ARTICULATION

CHANGE IN MATERIAL COLORS TO PROVIDE VISUAL SEPARATION TO THE ELEVATION

ARTISTIC USE OF MATERIALS CREATES AN ARCHITECTURAL INTEREST AT THE SKYLINE

IMP EXCEEDS SUSTAINABLE LEED STANDARDS BY PROVIDING SUPERIOR R-VALUE INSULATION FOR GREATER THERMAL EFFICIENCY



2727 N. CENTRAL AVENUE
PHOENIX, ARIZONA 85004
P: 602.263.6841



Southeast Rendering

SHEET 02

©2024 ALL RIGHTS RESERVED 2024-05-28



A&M ASSOCIATES, INC.
2727 N. CENTRAL AVENUE
PHOENIX, ARIZONA 85004
P: 602.263.6841



Northeast Rendering

SHEET 03

©2024 ALL RIGHTS RESERVED 2024-05-28



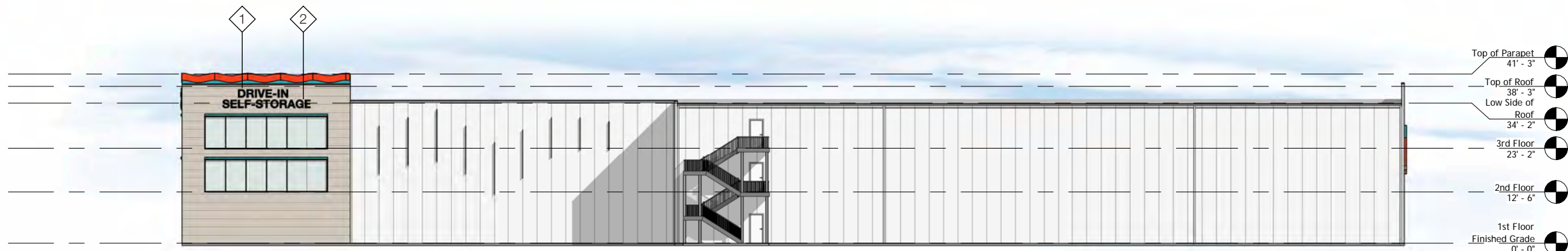
VERTICAL OFFSETS CREATE A PATTERN OF LIGHT, SHADOW, AND LYRICAL ARTICULATION

9"H x 3"D EYEBROW TRIMS CREATE AN ARCHITECTURAL DESIGN ELEMENT, PROVIDING INTEREST AT THE SKYLINE

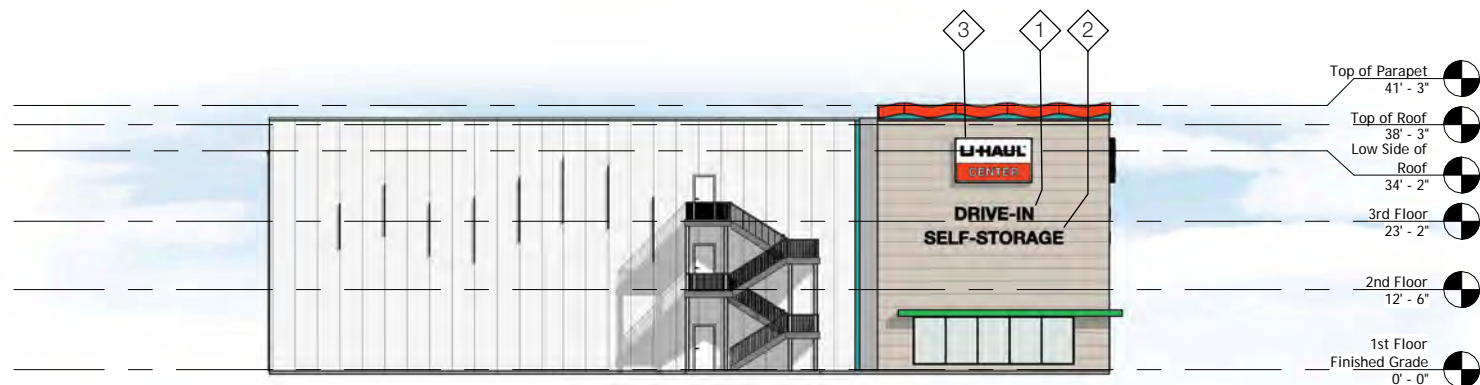
PROMINENT OVERHANG OVER CUSTOMER ENTRANCE AREA, CREATES ARCHITECTURAL INTEREST WHILE PROTECTING CUSTOMERS FROM THE ELEMENTS.

WOOD GRAIN CARRIAGE DOORS PROVIDE A WELCOMING ENTRANCE FOR CUSTOMERS

ARCHITECTURAL FENESTRATION TO ENHANCE RETAIL UNIFORMITY IN THE AREA



WEST ELEVATION - BLDG. A
Scale: 1" = 30'



SOUTH ELEVATION - BLDG. A
Scale: 1" = 30'



NORTH ELEVATION - BLDG. A
Scale: 1" = 30'



EAST ELEVATION - BLDG. A
Scale: 1" = 30'

SIGN CALCULATIONS	
1	DIRECTIONAL DIMENSIONAL LETTERS 12.16'W X 2'H (24.32 SQFT)*
2	DIMENSIONAL LETTERS 21.5'W X 2'H (43 SQFT)*
3	LIT CABINET SIGN 12'W X 7'H (84 SQFT)
4	DIMENSIONAL LETTERS 9.4'W X 2'H (18.8 SQFT)*
5	DIMENSIONAL LETTERS 25.83'W X 2'H (51.66 SQFT)*

*Lit sign option is available upon request



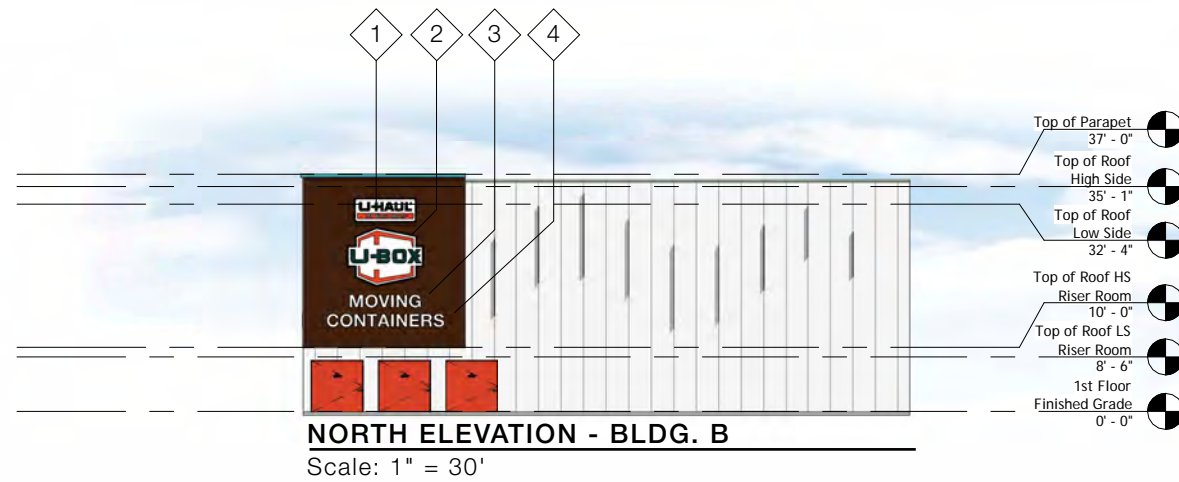
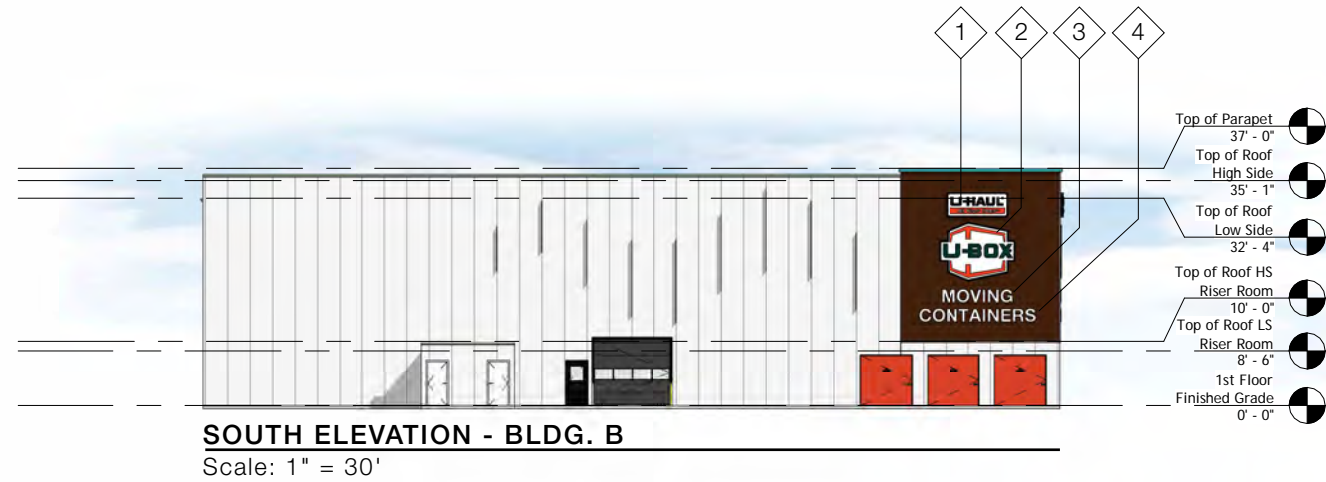
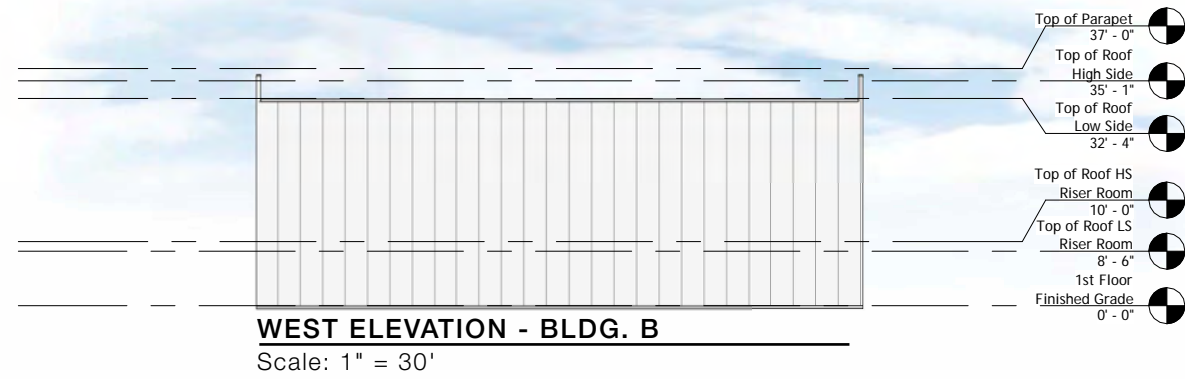
A&M ASSOCIATES, INC.
2727 N. CENTRAL AVENUE
PHOENIX, ARIZONA 85004
P: 602.263.6841



Sign Calculations

SHEET 04

©2024 ALL RIGHTS RESERVED 2024-05-28



SIGN CALCULATIONS	
1	NON-LIT CABINET SIGN 9.66'W X 3.8'H (36.71 SQFT)*
2	NON-LIT CABINET SIGN 11.95'W X 9.19'H (109.82 SQFT)*
3	DIMENSIONAL LETTERS 11.23'W X 2'H (22.46 SQFT)*
4	DIMENSIONAL LETTERS 18.26'W X 2'H (36.52 SQFT)*

*Lit sign option is available upon request



A&M ASSOCIATES, INC.
 2727 N. CENTRAL AVENUE
 PHOENIX, ARIZONA 85004
 P: 602.263.6841

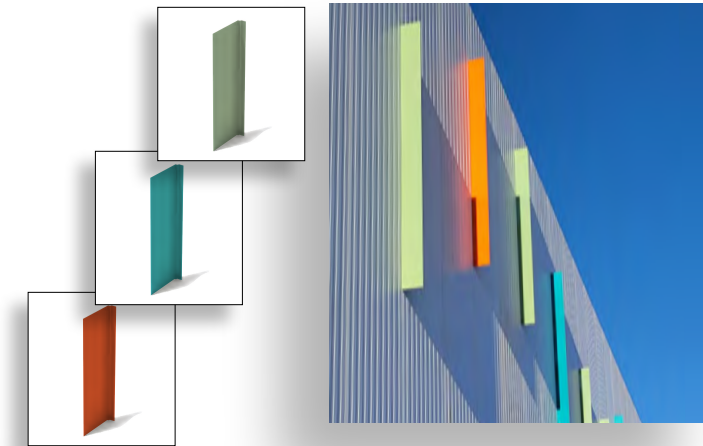


Sign Calculations

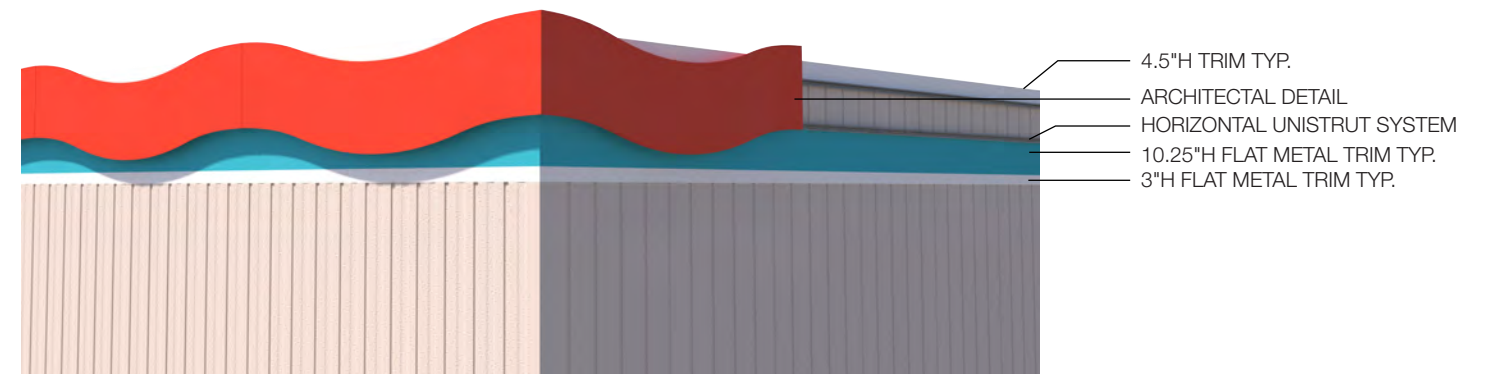
SHEET 05

©2024 ALL RIGHTS RESERVED 2024-05-28

9"D Lyrical Articulated Design Element

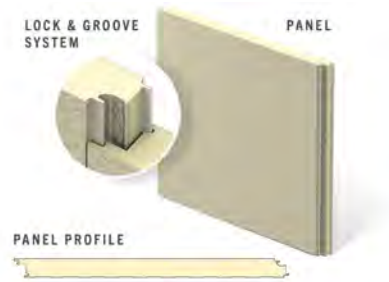


Parapet Architectural Details



Metl-Span Santa Fe (or Equivalent IMP)

The Metl-Span CF Santa Fe panel has a flat exterior profile with a heavy, embossed stucco texture that mimics the look of a masonry stucco finish but with the added value of an insulated metal panel. The profile is flush with the warmth of an old-world finish, providing a visually pleasing building.



PRODUCT SPECIFICATIONS

WIDTH • 24", 30", 36", 42"

THICKNESS • 2", 2½", 2¾", 3", 4"

LENGTH • 8'-0" to 32'-0" Horizontal
8'-0" to 40'-0" Vertical

EXTERIOR PROFILE • Flat profile with heavy embossing resembling desert southwestern appearance

EXTERIOR FACE • G-90 galvanized or AZ-50 aluminum-zinc coated steel in 24 and 22 Ga.

INTERIOR PROFILE • Light Mesa, nominal ¼" deep, embossed or unembossed

INTERIOR FACE • G-90 galvanized or AZ-50 aluminum-zinc coated in 26, 24 and 22 Ga.

CORE • Foamed-in-place, PUR Foam Core, zero ozone depleting (zero ODP) Class 1 foam

JOINT • Offset double tongue-and-groove with extended metal shelf for positive face fastening

REVEAL • Up to 1" reveal options in ¼", ½", ¾" and 1" increments

U-FACTORS AND R-VALUES**

U-FACTOR (BTU/h-ft ² -F)		R-VALUE (h-ft ² -F/BTU)	
PANEL WIDTH: 42"		PANEL WIDTH: 42"	
2"	0.059	2"	17.5
2.5"	0.046	2.5"	21.9
3"	0.038	3"	26.2
4"	0.028	4"	35.0

*Available only from Nevada plant
**Based on ASTM C518, ASTM C1363 and thermal modeling



CS-620 Panel (or Equivalent Panel)

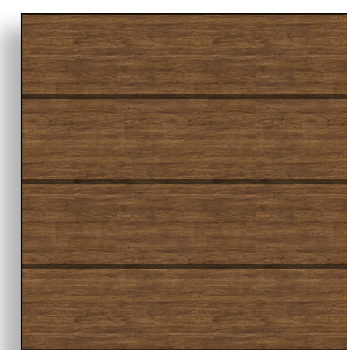
Concept Series single-skin wall panels feature concealed fasteners and a common-lock joint that allows the panels to be integrated with each other. CS-620 interchangeable single-skin metal panels have 16" wide coverage along with 7/8" deep profiled panels featuring two asymmetrical ribs.

Concealed fastener metal siding systems may vary from an uninsulated screen wall to a lock joint metal wall system utilizing BW Systems, an insulated composite backup panel system. This wall panel system has two attachment clip options.

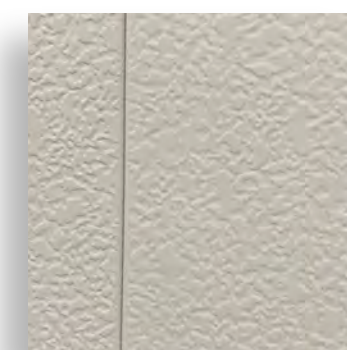
All Concept Series wall panels can be installed in a variety of horizontal or vertical rainscreen applications to form a complete wall system.



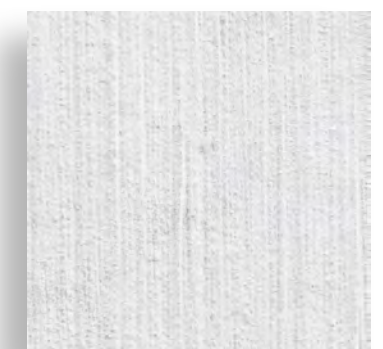
16"w panel - CS-620



Horizontal Lap Siding
Embossed Walnut
EXAMPLE



Stucco Embossed IMP
EXAMPLE



Light Broom Finished
TILT-UP CONCRETE
EXAMPLE



2727 N. CENTRAL AVENUE
PHOENIX, ARIZONA 85004
P: 602.263.6841



of Midland
Midland, ON
(841076)

Material Board

SHEET 08