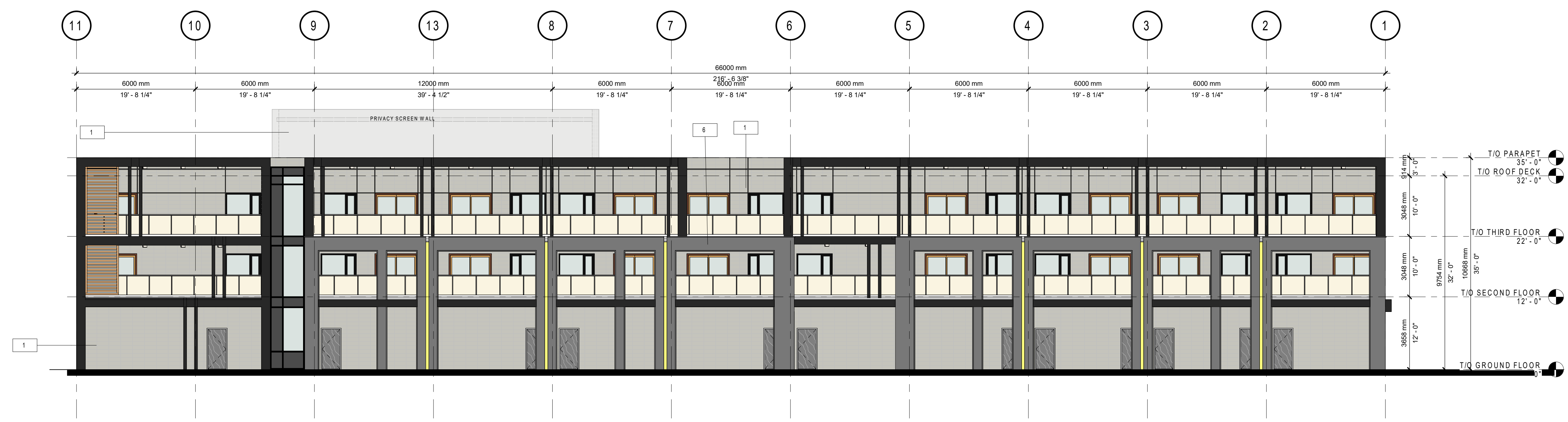


MATERIAL LEGEND	
1.	EIFS (STACKED BOND TEXTURE) - LIGHT GREY
2.	EIFS BLOCK - BLACK
3.	FLUTED WOOD PANEL
4.	SPANDREL
5.	GLAZING
6.	STONE CLADDING



1 NORTH ELEVATION
A201 1" = 10'-0"

NO.	ISSUED	DATE

DO NOT SCALE DRAWINGS. USE ONLY DRAWINGS MARKED "ISSUED FOR CONSTRUCTION". VERIFY CONFIGURATIONS AND DIMENSIONS ON SITE BEFORE BEGINNING WORK. NOTIFY ARCHITECT IMMEDIATELY OF ANY ERRORS, OMISSIONS OR DISCREPANCIES.

CHAMBERLAIN ARCHITECT SERVICES LIMITED AND CHAMBERLAIN CONSTRUCTION SERVICES LIMITED HAVE SIMILAR OWNERSHIP.

CHAMBERLAIN ARCHITECT SERVICES LIMITED HAS COPYRIGHT. CONSTRUCTING A SUBSTANTIALLY SIMILAR BUILDING WITHOUT PERMISSION MAY INFRINGE THE COPYRIGHT OWNER'S RIGHTS. MAKING MINOR CHANGES TO PLANS DOES NOT NECESSARILY AVOID COPYRIGHT INFRINGEMENT. INNOCENT INFRINGEMENT IS NOT A DEFENSE TO COPYRIGHT INFRINGEMENT. ©



2 SOUTH ELEVATION
A201 1" = 10'-0"

**BALM BEACH
COMMERCIAL
BUILDING C**

Enter address here

SHEET NAME

**EXTERIOR
ELEVATION I**

START DATE	OCTOBER 2022
DRAWN BY	HK
CHECKED BY	SM
SCALE	1" = 10'-0"
PROJECT NO.	122055

DRAWING

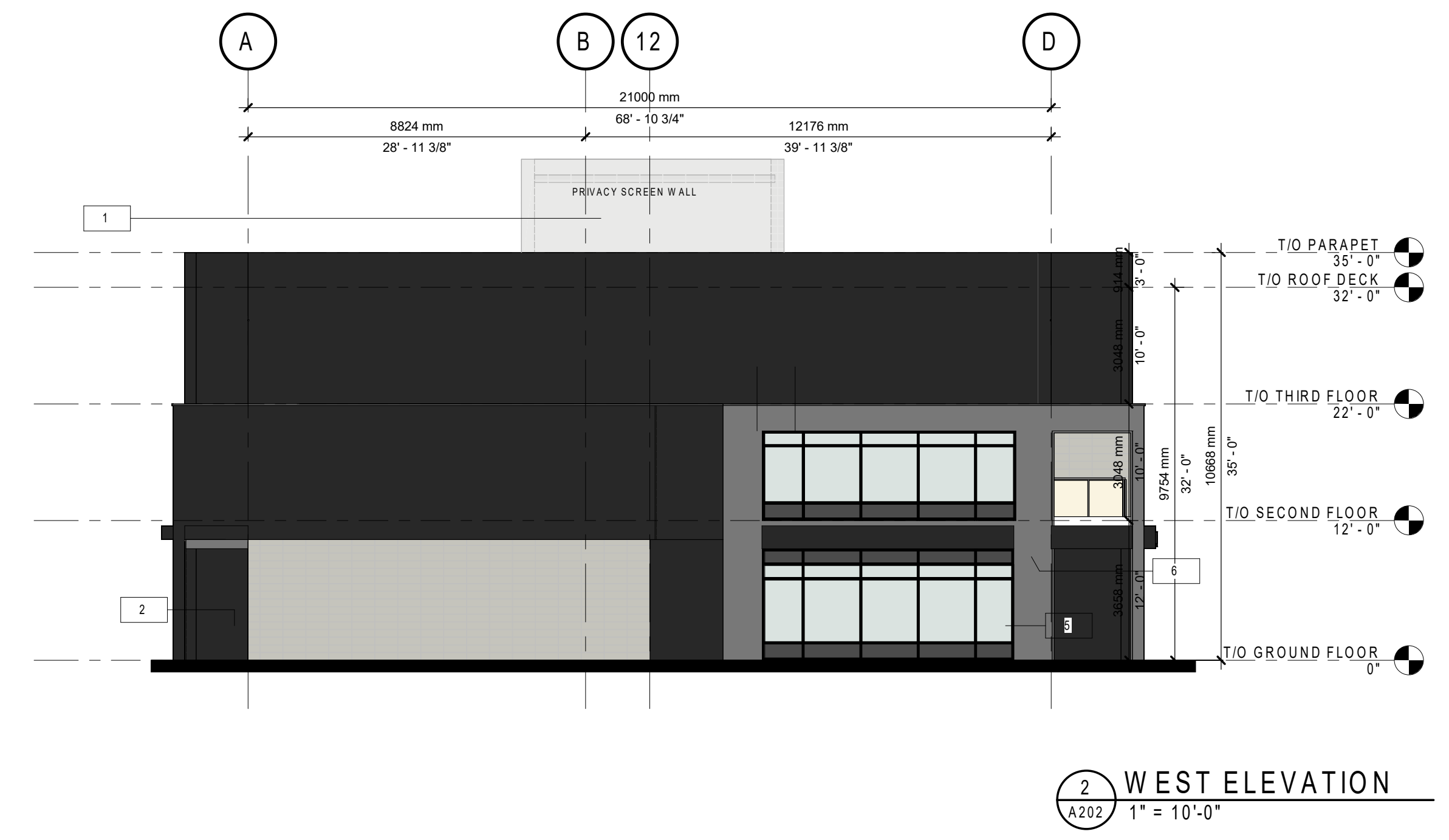
A201

C:\Users\hassem\Documents\122055-Balm Beach Commercial and Residential BUILDING C 2024.08.14_hassen.dwg

MATERIAL LEGEND	
1.	EIFS (STACKED BOND TEXTURE) - LIGHT GREY
2.	EIFS BLOCK - BLACK
3.	FLUTED WOOD PANEL
4.	SPANDREL
5.	GLAZING
6.	STONE CLADDING



1 EAST ELEVATION
A202 1" = 10'-0"



2 WEST ELEVATION
A202 1" = 10'-0"

NO.	ISSUED	DATE

DO NOT SCALE DRAWINGS. USE ONLY DRAWINGS MARKED "ISSUED FOR CONSTRUCTION". VERIFY CONFIGURATIONS AND DIMENSIONS ON SITE BEFORE BEGINNING WORK. NOTIFY ARCHITECT IMMEDIATELY OF ANY ERRORS, OMISSIONS OR DISCREPANCIES.

CHAMBERLAIN ARCHITECT SERVICES LIMITED AND CHAMBERLAIN CONSTRUCTION SERVICES LIMITED HAVE SIMILAR OWNERSHIP.

CHAMBERLAIN ARCHITECT SERVICES LIMITED HAS COPYRIGHT. CONSTRUCTING A SUBSTANTIALLY SIMILAR BUILDING WITHOUT PERMISSION MAY INFRINGE THE COPYRIGHT OWNER'S RIGHTS. MAKING MINOR CHANGES TO PLANS DOES NOT NECESSARILY AVOID COPYRIGHT INFRINGEMENT. INNOCENT INFRINGEMENT IS NOT A DEFENSE TO COPYRIGHT INFRINGEMENT. ©

SEAL

BALM BEACH COMMERCIAL BUILDING C

Enter address here

SHEET NAME

EXTERIOR ELEVATION II

START DATE	OCTOBER 2022
DRAWN BY	HK
CHECKED BY	SM
SCALE	1" = 10'-0"
PROJECT NO.	122055

DRAWING

A202

C:\Users\haem\Documents\122055-Balm Beach Commercial and Residential BUILDING C\20240814_haem\2\FW5.rvt 2024-10-07 2:58:14 PM

MATERIAL LEGEND	
1.	EIFS (STACKED BOND TEXTURE) - LIGHT GREY
2.	EIFS BLOCK - BLACK
3.	FLUTED WOOD PANEL
4.	SPANDREL
5.	GLAZING
6.	STONE CLADDING



1 NORTH ELEVATION
A203 1" = 10'-0"

NO.	ISSUED	DATE

DO NOT SCALE DRAWINGS. USE ONLY DRAWINGS MARKED "ISSUED FOR CONSTRUCTION". VERIFY CONFIGURATIONS AND DIMENSIONS ON SITE BEFORE BEGINNING WORK. NOTIFY ARCHITECT IMMEDIATELY OF ANY ERRORS, OMISSIONS OR DISCREPANCIES.

CHAMBERLAIN ARCHITECT SERVICES LIMITED AND CHAMBERLAIN CONSTRUCTION SERVICES LIMITED HAVE SIMILAR OWNERSHIP.

CHAMBERLAIN ARCHITECT SERVICES LIMITED HAS COPYRIGHT. CONSTRUCTING A SUBSTANTIALLY SIMILAR BUILDING WITHOUT PERMISSION MAY INFRINGE THE COPYRIGHT OWNER'S RIGHTS. MAKING MINOR CHANGES TO PLANS DOES NOT NECESSARILY AVOID COPYRIGHT INFRINGEMENT. INNOCENT INFRINGEMENT IS NOT A DEFENSE TO COPYRIGHT INFRINGEMENT. ©



2 SOUTH ELEVATION
A203 1" = 10'-0"

BALM BEACH COMMERCIAL BUILDING D

Enter address here

SHEET NAME

EXTERIOR ELEVATION I

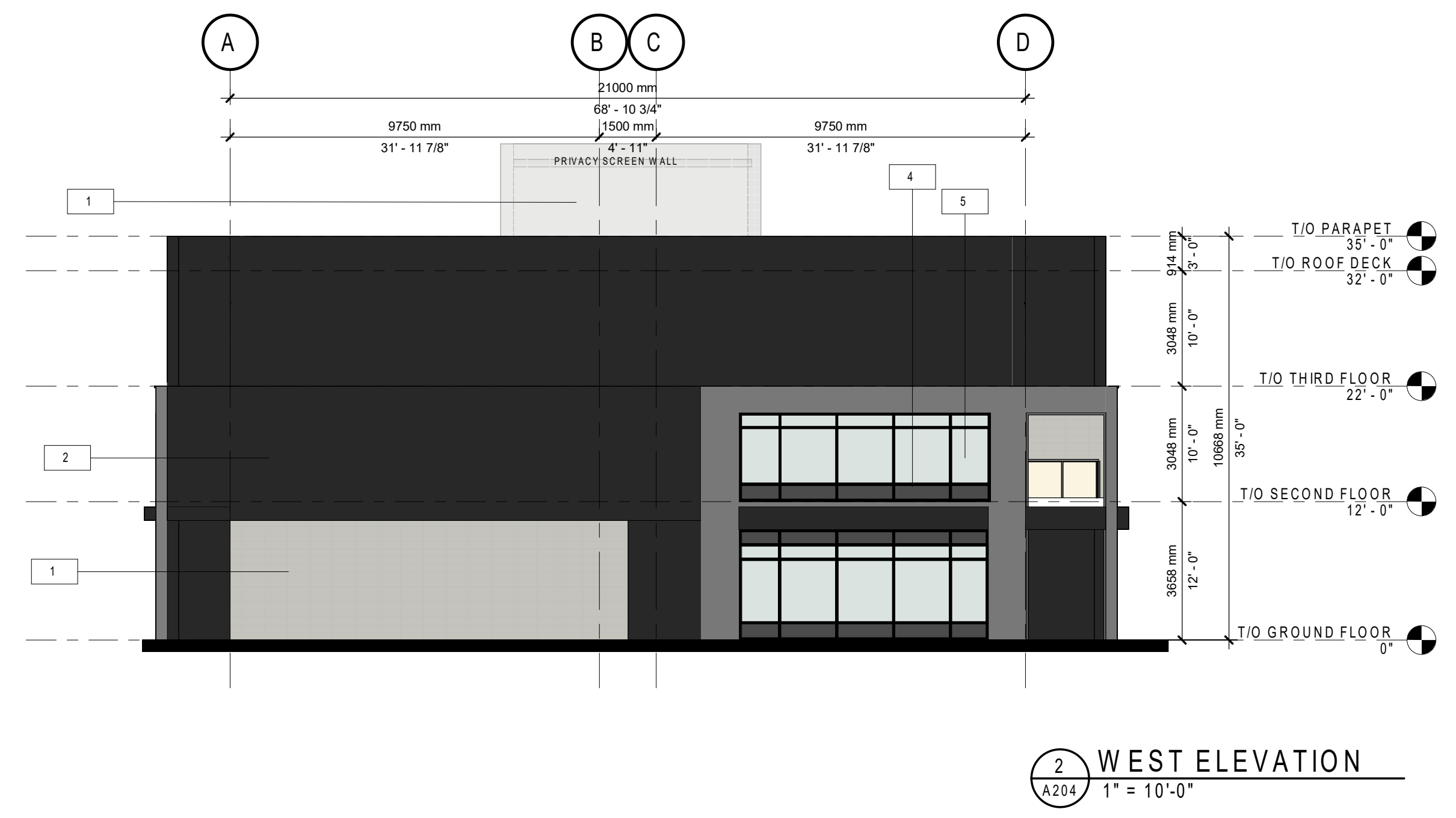
START DATE	OCTOBER 2022
DRAWN BY	HK
CHECKED BY	SM
SCALE	1" = 10'-0"
PROJECT NO.	122055

DRAWING

A203

C:\Users\hassem\Documents\122055-Balm Beach Commercial and Residential - BUILDING D - 2024-02-23 - hassem.dj.rvt

MATERIAL LEGEND	
1.	EIFS (STACKED BOND TEXTURE) - LIGHT GREY
2.	EIFS BLOCK - BLACK
3.	FLUTED WOOD PANEL
4.	SPANDREL
5.	GLAZING
6.	STONE CLADDING



NO.	ISSUED	DATE

DO NOT SCALE DRAWINGS. USE ONLY DRAWINGS MARKED "ISSUED FOR CONSTRUCTION". VERIFY CONFIGURATIONS AND DIMENSIONS ON SITE BEFORE BEGINNING WORK. NOTIFY ARCHITECT IMMEDIATELY OF ANY ERRORS, OMISSIONS OR DISCREPANCIES.

CHAMBERLAIN ARCHITECT SERVICES LIMITED AND CHAMBERLAIN CONSTRUCTION SERVICES LIMITED HAVE SIMILAR OWNERSHIP.

CHAMBERLAIN ARCHITECT SERVICES LIMITED HAS COPYRIGHT. CONSTRUCTING A SUBSTANTIALLY SIMILAR BUILDING WITHOUT PERMISSION MAY INFRINGE THE COPYRIGHT OWNER'S RIGHTS. MAKING MINOR CHANGES TO PLANS DOES NOT NECESSARILY AVOID COPYRIGHT INFRINGEMENT. INNOCENT INFRINGEMENT IS NOT A DEFENSE TO COPYRIGHT INFRINGEMENT. ©

SEAL

BALM BEACH COMMERCIAL BUILDING D

Enter address here

EXTERIOR ELEVATION II

START DATE	OCTOBER 2022
DRAWN BY	HK
CHECKED BY	SM
SCALE	1" = 10'-0"
PROJECT NO.	122055

A204

C:\Users\haseni\Documents\122055-Balm Beach Commercial and Residential - BUILDING D - 2024-02-23 - haseni_24.FW5.rvt 2024-10-07 2:58:44 PM