

APPENDIX E

**EXISTING PARKS: DESIGN
CONCEPTS**

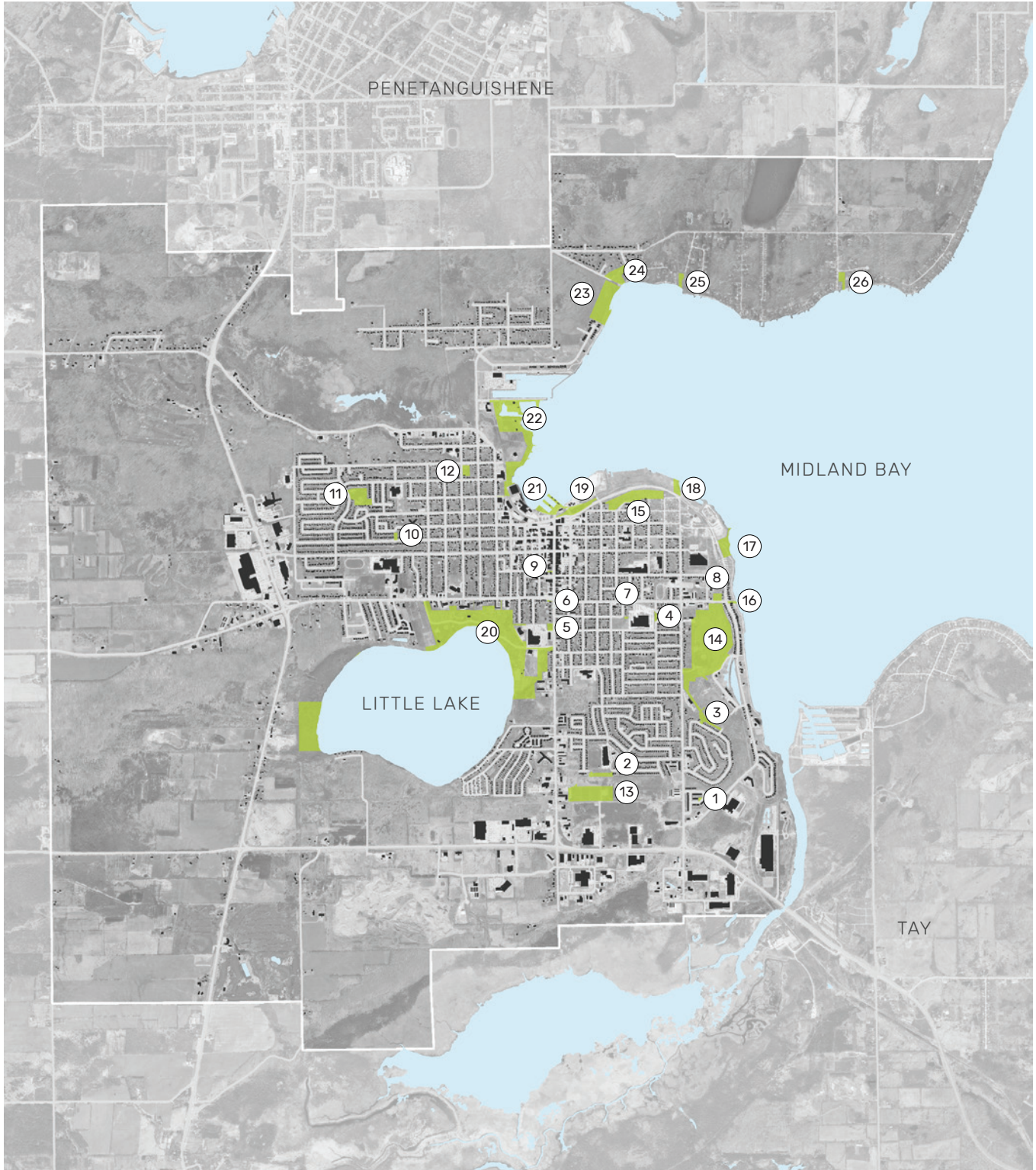


Figure AE.1: Existing Parks in Midland

APPENDIX E

EXISTING PARKS: DESIGN CONCEPTS

RECOMMENDATIONS FOR EXISTING PARKS

The following section provides specific recommendations for each of Midland's 26 Parks. The recommendations are numbered and organized into the three tiers: Primary, Secondary and Tertiary and colour coded on a plan on the facing page.

For information on the implementation strategy and priority projects please refer to Section 7 section of this report.

The recommendations for each park are organized as follows with a summary table for each grouping:

Neighbourhood Parks

1. Bob Merkley Park
2. Trillium Woods Park
3. Quota Park
4. Ernest T Bates Memorial Park
5. Cenotaph Park
6. Frazer Parkette
7. Regent Park
8. Georgian View Park
9. Neezhoday Park
10. Carpenter Park
11. Mac McAllen Park
12. Bayview Park

Community Parks

13. Galloway Park
14. Tiffin Park
15. Edgehill Park

Waterfront Parks

16. Vas Kuchar Memorial Parkette
17. Veterans Waterfront Park
18. Midland Bay Landing Park
19. Harbourside/ David Onley Park
20. Little Lake
21. Town Dock
22. Pete Pettersen Park
23. McCullough Park
24. Gawley Park
25. Glenbrook Gardens
26. Sunrise Park

It is important to note that the concepts presented here illustrate just one potential design based on the proposed program and are the basis to understand budget requirements. However, it is assumed that when the time comes to undertake park improvements, a separate park design process would be undertaken which would include consultation with the community to determine the preferred park design. Subsequently, the design process would include detailed design and contract document production to implement the vision for the park.

1. BOB MERKLEY PARK

Design Overview

Bob Merkley Park is a small park in south east Midland off of Southwinds Crescent. Overall the park is in good condition as it was recently constructed. Investment in this park should focus on maintenance and reducing the extent of lawn area to help improve the park's biodiversity and minimize the resources required to maintain the park over the long term.

Key recommendations for the park include:

Primary

1. Address stormwater accumulation at low point at the north west of the park
2. Replace sand surfacing with accessible engineered wood fiber mulch
3. Bike parking
4. Upgrade existing park bench to meet accessibility guidelines
5. Provide shade structure

Secondary

6. Introduce naturalized landscaped areas in place of sod
7. Provide additional seating
8. Provide accessible picnic table

Tertiary

9. Provide lighting- possibility for solar as pilot project



Figure AE.2: Bob Merkley Park Design Concept

2. TRILLIUM WOODS PARK

Design Overview

Trillium Woods Parks is a section of land adjacent to St. Theresa's Catholic High School. It functions merely as an extension of the school grounds with no recreation or programmed uses.

Key recommendations for the park include:

Primary

None

Secondary

None

Tertiary

1. Naturalizing sod areas to enhance biodiversity and reduce the need for regular mowing
2. Introducing more tree planting
3. Stone dust pathway connection between St. Theresa's Catholic School and Galloway Park

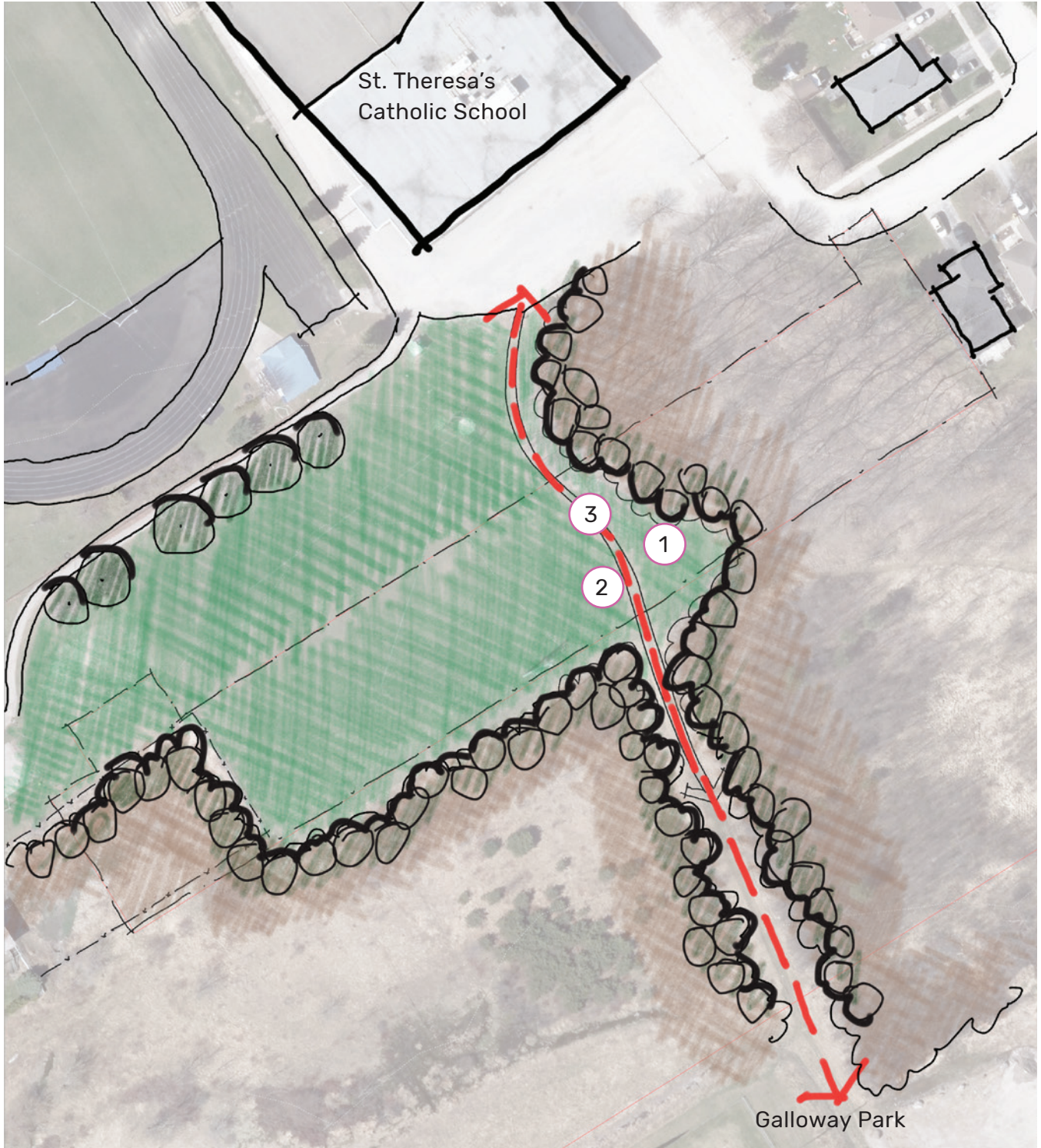


Figure AE.3: Trillium Woods Park Design Concept

3. QUOTA PARK

Design Overview

Quota Park is a small neighbourhood playground east of William Street. It is connected to Tiffin Park by a trail which is located north of the park. Improvements to the park focus on accessibility and improving the parks connections to the surrounding trail network.

Key recommendations include:

Primary

1. Replace sand surfacing with accessible engineered wood fiber mulch, with curb edge
2. New playground to CSA standards
3. Accessible seating
4. Accessible route through park
5. Bike rack
6. Staircase improvements to improve accessibility and safety

Secondary

7. Trailhead for pathway system

Tertiary

8. Undertake woodlot management and new tree planting to ensure healthy succession of the woodlot over the long term



Figure AE.4: Quota Park Design Concept

4. ERNEST T BATES MEMORIAL PARK

Design Overview

Ernest T Bates Memorial Park is an underutilized green space which acts as a pedestrian connection shortcut between two sections of Irwin Street.

Key recommendations for the park include:

Primary

1. Provide accessible seating
2. Widen walkway to meet accessibility requirements

Secondary

3. Naturalizing area on west side of walkway to enhance biodiversity and reduce the need for regular mowing including along top of adjacent retaining walls
4. Additional tree planting

Tertiary

5. Upgrade lighting to LED
6. Create secondary stone dust pathway (will require some regrading of slope)

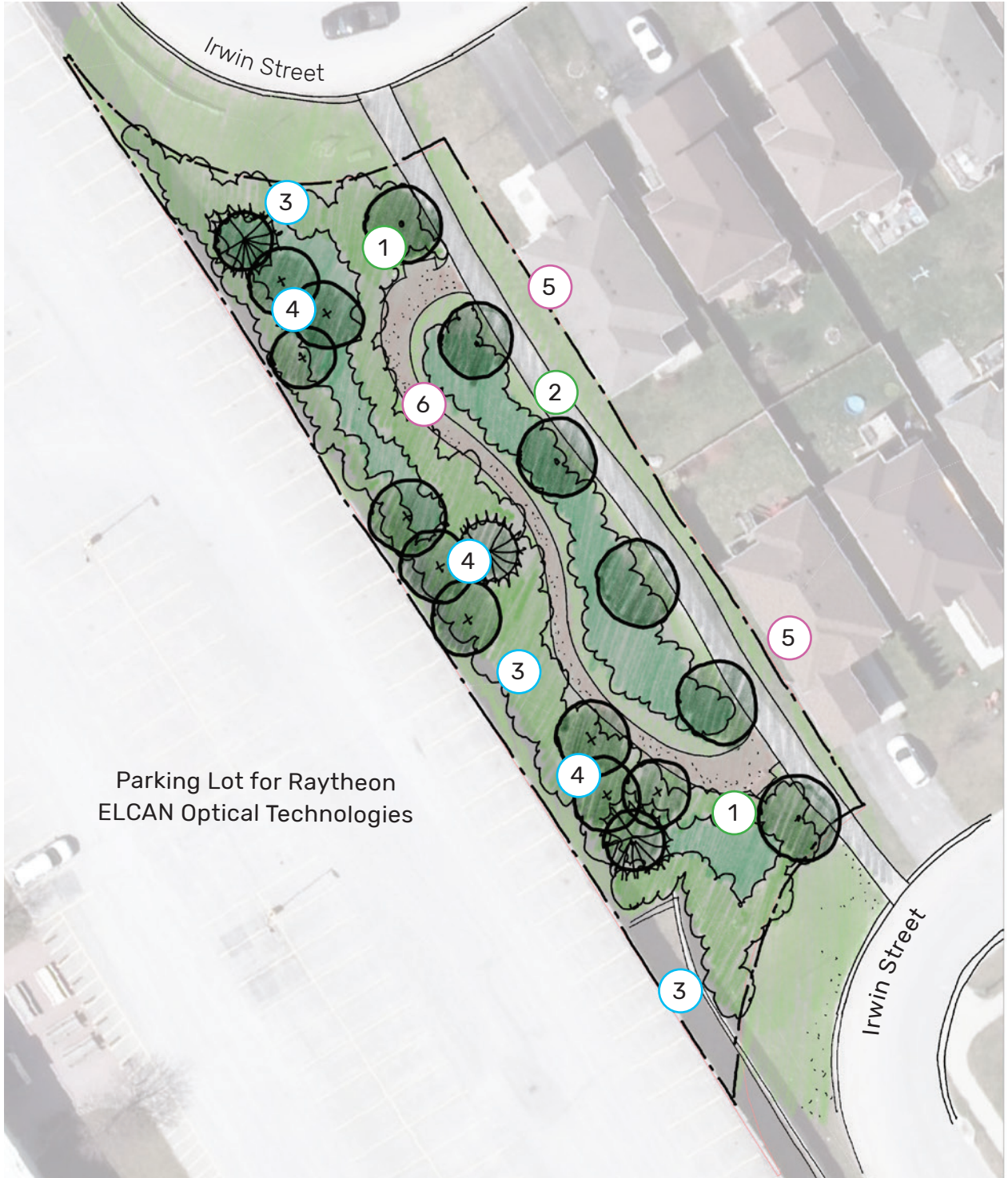


Figure AE.5: Ernest T Bates Memorial Park Design Concept

5. CENOTAPH

Design Overview

The improvements proposed to the Cenotaph focus on creating a special gathering space to honour Canada's war veterans. This includes improvements to improve access to the memorial, providing space for gatherings and ceremonies, and better integration of the memorial within the surrounding park

Key recommendations for the Cenotaph include:

Primary

1. Provide accessible entrance at northwest corner including curb cut, ramp and pathway to King Street
2. Remove light fixed to tree
3. Planting beds around mature trees with shade tolerant understorey planting
4. Replace existing seating and provide accessible seating
5. Paint perimeter fence
6. Bike racks

Secondary

7. Remove fence around memorial
8. Create plaza space around memorial to better integrate memorial with park and create a gathering space for ceremonies/gatherings

Tertiary

9. Additional tree planting
10. New lighting to enhance memorial
11. New LED morality lighting



Figure AE.6: Cenotaph Design Concept

6. FRAZER PARKETTE

Design Overview

Frazer Parkette is located at the south east corner of the intersection of King Street and Yonge Street. While it currently consists of open lawn and sparse planting, it has the potential to be an important identifier and gateway to the downtown.

Key recommendations for the park include:

Primary

1. Provide seating
2. Shade structure (architectural feature)
3. Bike racks

Secondary

4. Buffer between parkette and driveway
5. Small plaza/gathering space

Tertiary

6. Display planting/gardens at east end/corner of King and Yonge Street
7. Public Art/gateway/sign feature to signify arrival at King Street as a major route into the Downtown



Figure AE.7: Frazer Parkette Design Concept

7. REGENT PARK

Design Overview

Regent Park is a modest parkette at College Street and Hannah Street adjacent to the Raytheon ELCAN Optical Technologies manufacturing facility.

Key recommendations for the park include:

Primary

1. Replace sand surfacing with accessible engineered wood fiber mulch, with curb edge
2. Additional play amenities
3. Accessible seating
4. Shade for seating around playground
5. Bike racks

Secondary

6. Buffer planting between park and manufacturing facility
7. Tree planting

Tertiary

8. Public art opportunity: Murals on south side of north fence
9. Adult fitness station



Figure AE.8: Regent Park Design Concept

8. GEORGIAN VIEW PARK

Design Overview

Georgian View Park could be more accurately described as a trail or pathway through a woodlot, than a park. It currently consists of a natural surface trail from Yonge Street (north of Tiffin Park) and runs north linking to the larger Trail network towards Veterans Waterfront Park and the Rotary Trail.

Key recommendations for the park include:

Primary

1. Pathway improvements for accessibility
2. Provide accessible seating
3. Formalized link north to link to the Rotary Trail
4. Formalize crossing of Yonge Street to enhance safety for trail users from Georgian View Park to Tiffin Park

Secondary

5. Create trailhead (TH 7) at Yonge Street

Tertiary

6. Consider introducing adult fitness stations in park as part of a larger fitness circuit
7. Undertake woodlot management and new tree planting to ensure healthy succession of the woodlot over the long term



Figure AE.9: Georgian View Park Design Concept

9. NEEZHODAY PARK

Design Overview

Neezhoday Park is located between St. Paul's United Church and the Midland Public Library providing a pedestrian connection between King Street and Borsa Lane. The park should be enhanced to reflect this park's prominent location down by making it an important civic and a safe pedestrian connection.

Key recommendations for the park include:

Primary

1. Provide accessible seating
2. Improve pedestrian/vehicular interface at west end of park
3. Bike parking
4. Interpretation

Secondary

5. Create plaza space fronting onto King Street
6. Metal screens around transformer

Tertiary

7. Public art
8. Decorative lighting to enhance the park as a connection between King Street

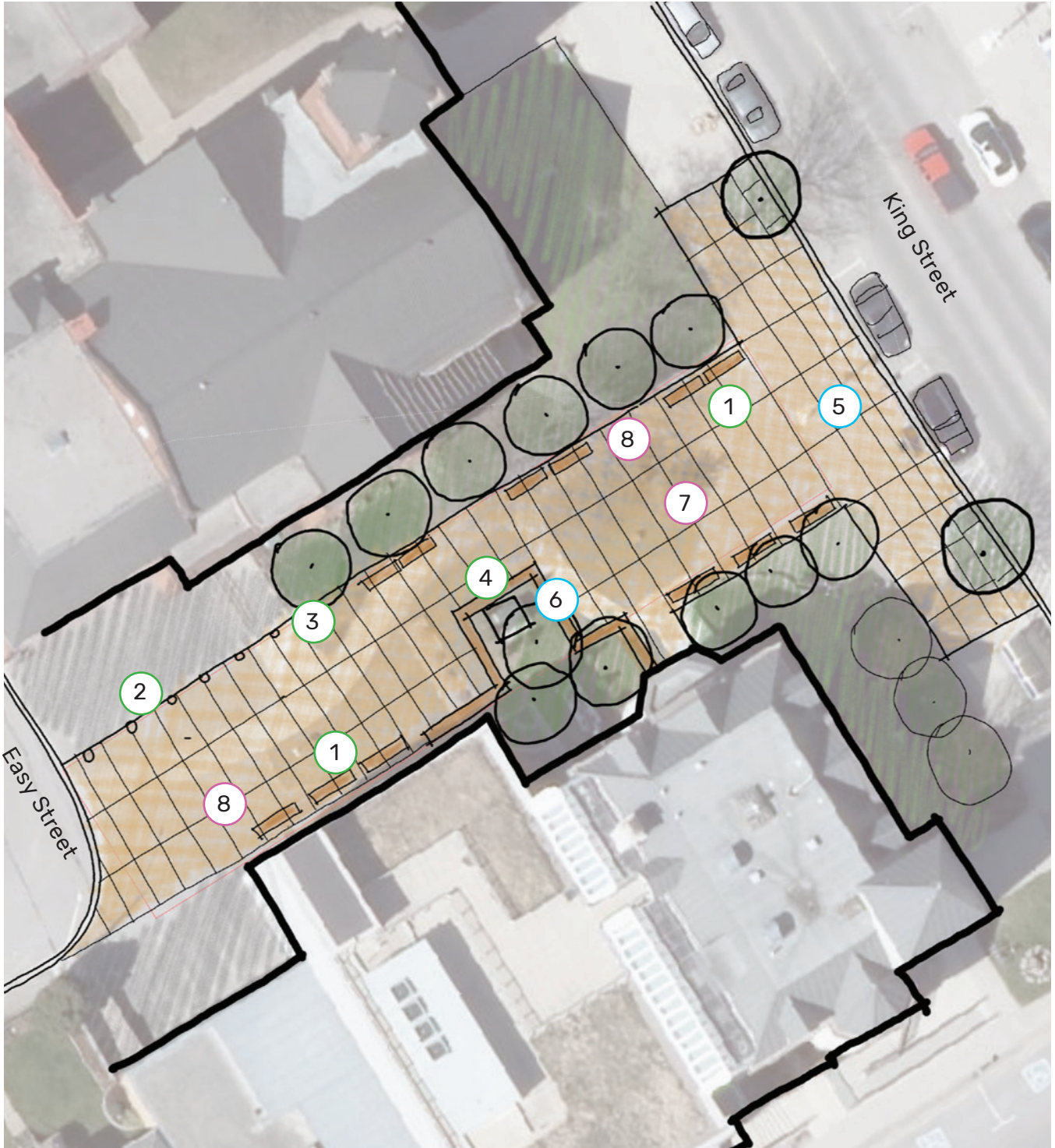


Figure AE.10: Neezhoday Design Concept

10. CARPENTER PARK

Design Overview

Carpenter Park provides a pedestrian link between Mapledawn Drive and Dominion Avenue. It is primarily a woodlot with an asphalt pathway, seating, lighting, sod and decorative boulders.

Key recommendations for the park include:

Primary

1. Replace benches to meet accessibility guidelines
2. Widen asphalt pathway when scheduled for replacement to meet accessibility requirements

Secondary

3. Replace lawn areas with naturalized planting

Tertiary

4. Undertake woodlot management and new tree planting to ensure healthy succession of the woodlot over the long term
5. Upgrade/replace lighting to LEDs
6. Consider introducing adult fitness station



Figure AE.11: Carpenter Park Design Concept

11. MAC MCALLEN PARK

Design Overview

Mac McAllen Park is a large neighbourhood park with a wide range of active and passive recreation amenities. The park is divided into two parts, The main portion of the park includes a ball diamond, parking lot, playground and sports court. While the eastern portion of the park is smaller and includes a small natural playground. The majority of the park is in good condition with the playground and picnic tables in fair condition.

Key recommendations for the park include:

Primary

1. Replace sand surfacing with accessible engineered wood fiber mulch, with curb edge
2. Provide shade structure between basketball court and playground
3. Provide accessible seating
4. Provide accessible picnic tables
5. Bike parking
6. Pathway connection around ball diamond

Secondary

7. Tree planting
8. Natural playground improvements

Tertiary

9. Undertake woodlot management and new tree planting to ensure healthy succession of the woodlot over the long term



Figure AE.12: Mac McAllen Park Design Concept

12. BAYVIEW PARK

Design Overview

Bayview Park is in need of significant upgrades throughout the park to address deteriorating park infrastructure (fencing, stairs and retaining wall), inadequate accessibility, aging play equipment and uninviting access points.

Key recommendations for the park include:

Primary

1. Replace sand surfacing with accessible engineered wood fiber mulch, with curb edge
2. Upgrade play equipment
3. Accessible pathway through park
4. Improved steps at entrance at Sixth Street and Victoria Street with handrail
5. Improved accessible entrance off Sixth St
6. Accessible benches on concrete pad
7. Accessible picnic table on concrete pad
8. Bike parking
9. Shade structure

Secondary

10. Reduce lawn area with naturalized landscape, community garden and/or pollinator garden
11. Repair asphalt on existing basketball court and paint

Tertiary

12. Replace chain link fence with lower fencing or planting
13. Public art piece on existing concrete wall (painted mural)
14. Additional tree planting
15. Field improvements for sports



Figure AE.13: Bayview Park Design Concept

13. GALLOWAY PARK

Design Overview

Galloway Park contains three soccer fields used for organized league play. The park is focused on active recreation

Key recommendations for the park include:

Primary

1. Accessible pathway/route to bleachers with designated viewing area for wheelchairs
2. Accessible seating
3. Bike Parking
4. Shaded benches for players
5. Information signage
6. Minor Trailhead (TH 12)

Secondary

7. Tree Planting
8. Formalize parking lot (asphalt and line painting) to maximize use
9. Entrance enhancements at King Street entrance
10. Formalize Brandon Street access and parking lot (asphalt and line painting)
11. Paved south access road with safe route on north side for pedestrian connection between east and west parking lots

Tertiary

12. Artificial Turf
13. Field lighting for night play
14. Pedestrian connection to Trillium Woods Park
15. Washroom Facilities



Figure AE.14: Galloway Park Design Concept

14. TIFFIN PARK

Design Overview

Tiffin Park is a large park consisting of trails through wooded areas as well as active recreation facilities.

Key recommendations for the park include:

Primary

1. Replace sand surfacing with accessible engineered wood fiber mulch, with curb
2. Additional play equipment
3. Improve connection/accessibility from parking lot to ball diamond
4. Improve connection/accessibility to dog off-leash area
5. Accessible seating
6. Bike parking
7. Shade structure
8. Major trailhead at entrance (TH 8)

Secondary

9. Reduce lawn area with naturalized landscape, community garden and/or pollinator garden
10. Additional planting

Tertiary

11. Adult fitness stations
12. Future upgrade to LED lighting
13. Undertake woodlot management and new tree planting to ensure healthy succession of the woodlot over the long term



Figure AE.15: Tiffin Park Design Concept

15. EDGEHILL PARK

Design Overview

Edgehill Park is a large park perched on the slope south of Bayshore Drive with views of Midland Bay. Proposed improvements focus on accessibility, playground upgrades, and naturalization.

Key recommendations for the park include:

Primary

1. Replace sand surfacing with accessible engineered wood fiber mulch, with curb edge
2. Upgrade playground equipment
3. Addition of hand rails to stone steps
4. Creation of an accessible route through the park including an accessible path to the Edyth Clark Memorial Garden
5. Accessible seating
6. Accessible picnic tables
7. Bike parking
8. Shaded seating area
9. Restore existing metal fence

Secondary

10. Naturalizing sod areas to enhance biodiversity and reduce the need for regular mowing
11. Introducing more tree planting
12. Improve brick steps to Bayshore Drive
13. Provide accessible route to Bayshore Drive

Tertiary

14. Replace lighting with LED
15. Enhancements to George Street access point (asphalt parking)

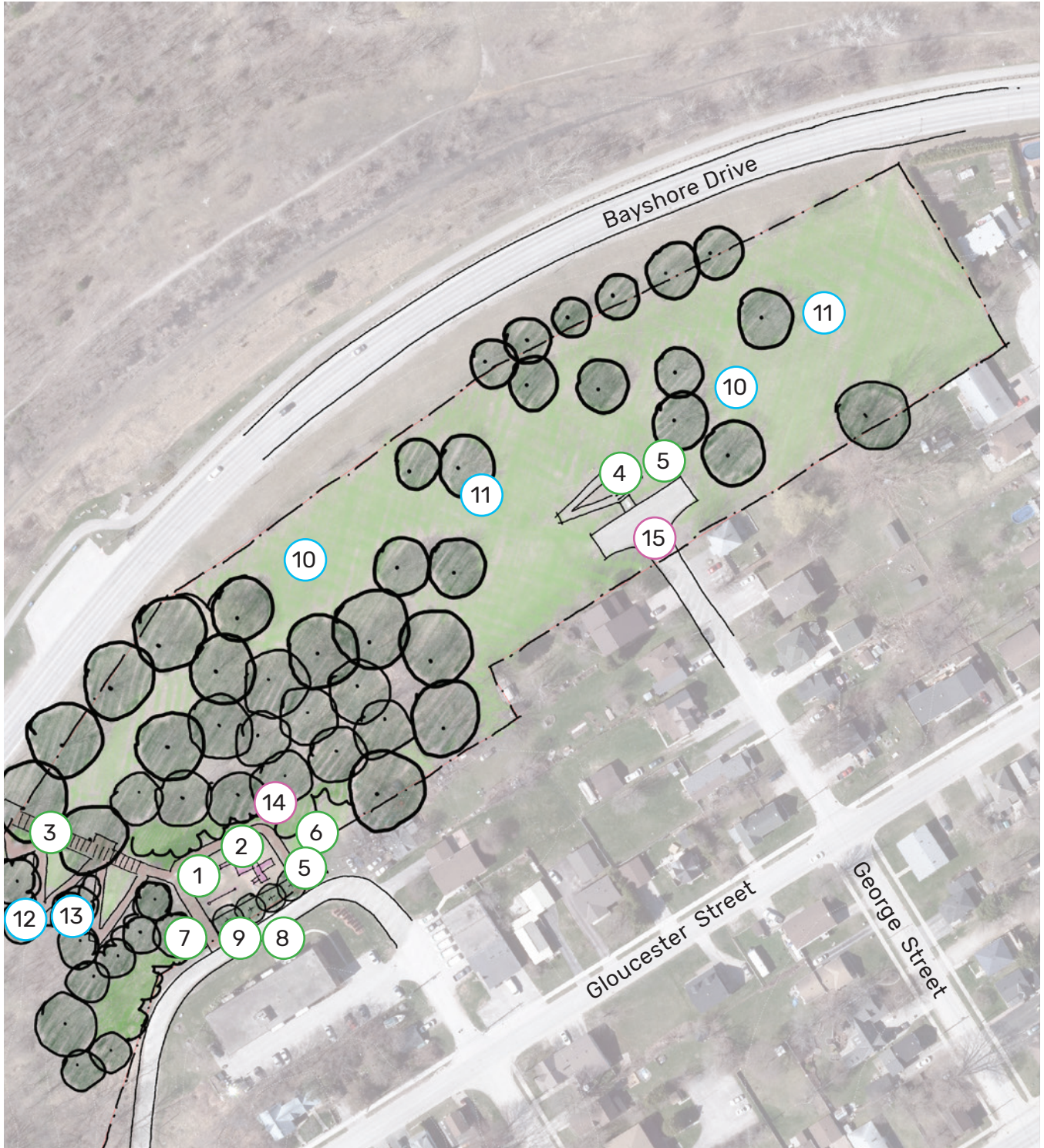


Figure AE.16: Edgehill Park Design Concept

16. VAS KUCHAR MEMORIAL PARKETTE

Design Overview

Vas Kuchar Memorial Parkette is a small public space fronting Aberdeen Drive with views of the Bay and a connection to the Rotary Waterfront Trail. Its signature element is a large gazebo structure with seating.

Key recommendations for the park include:

Primary

1. Accessible seating
2. Bike parking
3. Improved signage/wayfinding for pathway users

Secondary

None

Tertiary

4. Conversion of lighting to LED



Figure AE.17: Vas Kuchar Memorial Parkette Design Concept

17. VETERANS WATERFRONT PARK

Design Overview

Veterans Waterfront Park is a passive park space bisected by the Rotary trail. Approximately two-thirds of the park are wooded/naturalized with the remaining third being lawn with drainage swale and seating feature.

Key recommendations for the park include:

Primary

1. Accessible seating
2. Bike parking
3. Improved signage/wayfinding for pathway users

Secondary

4. Naturalizing sod areas to enhance biodiversity and reduce the need for regular mowing

Tertiary

5. Undertake woodlot management and new tree planting to ensure healthy succession of the woodlot over the long term



Figure AE.18: Veterans Waterfront Park Design Concept

18. MIDLAND BAY LANDING PARK

Design Overview

Midland Bay Landing Park is located off of Bayshore Drive immediately east of the Unimin Site/ future Midland Bay Landing development.

Key recommendations for the park include:

Primary

1. Improved pedestrian access route into the park from the Rotary Trail
2. Accessible seating
3. Accessible picnic tables
4. Park/water's edge interface improvements for enhanced safety
5. Shade structure
6. Bike parking

Secondary

7. Naturalization to reduce lawn area

Tertiary

8. Small craft launch enhancements
9. Fishing platforms
10. Lighting improvements/upgrade to LED
11. Enhance existing trailhead (TH 6) along Rotary Trail



Figure AE.19: Midland Pay Landing Park Design Concept

19. HARBOURSIDE PARK & DAVID ONLEY PARK

Design Overview

Harbourside Park & David Onley Park are important spaces in Midland's parks portfolio. They provide a green extension of Midland's waterfront and support the Rotary Trail Connection to the Harbour from the east.

Key recommendations for the park include:

Primary

1. Replace wood fiber mulch with rubber surfacing, with curb
2. Provide accessible seating
3. Provide accessible picnic tables
4. Replace wooden bridge in display garden
5. Bike parking
6. Shade structure

Secondary

7. Introduce more naturalized landscaped areas in place of sod

Tertiary

8. Introduce public art
9. Adult fitness stations along Waterfront Rotary Trail

Other

10. The 2015 Downtown Master Plan and Community Improvement Plan proposes the relocation of Central Marine and the Boathouse Eatery and including these properties into the function of the park. While this plan acknowledges the potential of this proposal, recommendations proposed here are limited to the current park area. It is assumed that should the Central Marine and/or the Boat House Eatery property be purchased by the Town in the future, the design for the entire park space would be considered through a detailed and inclusive public engagement process.



Figure AE.20: Harbourside Park & David Onley Park Design Concept

20. LITTLE LAKE PARK

Design Overview

Little Lake Park is Midland's premier destination park. It is a focus of the community for a wide range of active and passive park activities including special events. However, the park is in need of updating and enhancements to help maximize its potential.

Given the park's size and complexity and its importance to the community, a separate master planning process is recommended for the park to review its role and function in Midland, assess its programming, and how the park can be improved over the long term in a phased approach.

The recommendations and proposed priorities provided below may be used as guide to help develop a terms of reference for the master plan and provide direction over the short term until a guiding document is completed and the implementation process can begin.

Key recommendations for the park include:

Primary

1. Replace sand surfacing with accessible engineered wood fiber mulch, with curb edge
2. Provide an accessible route/walkway between parking lots, restaurant and seating around lake
3. Accessible benches
4. Accessible picnic tables
5. Repair emergency phones
6. Provide accessible route to beach and water (mobi-mat)

Secondary

7. Reduce size of beach volleyball
8. Consolidate individual play structures into one play space
9. Bike parking
10. Park wayfinding signage at each park access point



Figure AE.21: Little Lake Park Design Concept

Tertiary

11. New major trailhead (TH 19)
12. Boat launch improvements
13. Fitness stations
14. Undertake woodlot management and new tree planting to ensure healthy succession of the woodlot over the long term
15. Investigate potential for third party enterprise to operate a floating playground and cable water park
16. Investigate interest/feasibility of providing a mini putt course



Figure AE.22: Little Lake Park West Side Design Concept



Figure AE.23: Little Lake Park Central Area Design Concept



Little Lake

Figure AE.24: Little Lake Park East Side Design Concept

21. TOWN DOCKS

Design Overview

The Town Docks are at the centre of waterfront activity in Midland attracting both locals and tourists during special events, boaters, and docking cruise ships. The docks have public washrooms, tourism information, and a boat cruise ticket office, three shade structures, seating, and public parking lot.

Key recommendations for the park include:

Primary

1. Improved pedestrian access route into the park
2. Accessible benches
3. Accessible picnic tables
4. Bike parking
5. Shade structure, plaza & picnic area
6. Park/water's edge interface improvements for improved safety

Secondary

7. Additional planting
8. New major trailhead (TH 5)

Tertiary

9. Conversion of lighting to LED
10. Reconfigured parking lot

Other

11. The 2015 Downtown Master Plan and Community Improvement Plan proposes the realignment of Bayshore Drive, reduction and parking, and the subsequent reconfiguration of the Town Docks. While this plan acknowledges the potential of this proposal, recommendations proposed here are limited to the current park area. It is assumed that should Bayshore Drive be realigned and the park area be expanded in the future, the design for the entire park space would be considered through a detailed and inclusive public engagement process.



Figure AE.25: Town Docks Design Concept

22. PETE PETERSEN PARK

Design Overview

Pete Pettersen Park is one of Midland's destination waterfront parks providing boat access to Georgian Bay, sandy beach, and ball field. It is well connected to the Town via the Rotary Trail which traverses the park. However, the park is in need on a number of upgrades to the existing facilities and improved accessibility. Key recommendations for the park include:

Primary

1. Improved pedestrian access route into the park from the Rotary Trail
2. Update and consolidate playground equipment
3. Replace sand surfacing with accessible engineered wood fiber mulch, with curb
4. Accessible seating
5. Accessible picnic tables
6. Large shade structure
7. Repair/replace emergency pole with phone
8. Bike parking
9. Park wayfinding signage at each park access point
10. Major trailhead (TH 3) at parking lot

Secondary

11. Introduce more naturalized landscaped areas in place of sod
12. Bike repair station
13. Minor trailhead (TH 4) at Victoria Street

Tertiary

14. Relocate baseball diamond and convert to multi sport field
15. Formalize waterfront lookouts
16. Boat launch improvements
17. Fitness stations
18. Undertake woodlot management and new tree planting to ensure healthy succession of the woodlot over the long term



Figure AE.26: Pete Pettersen Park Design Concept

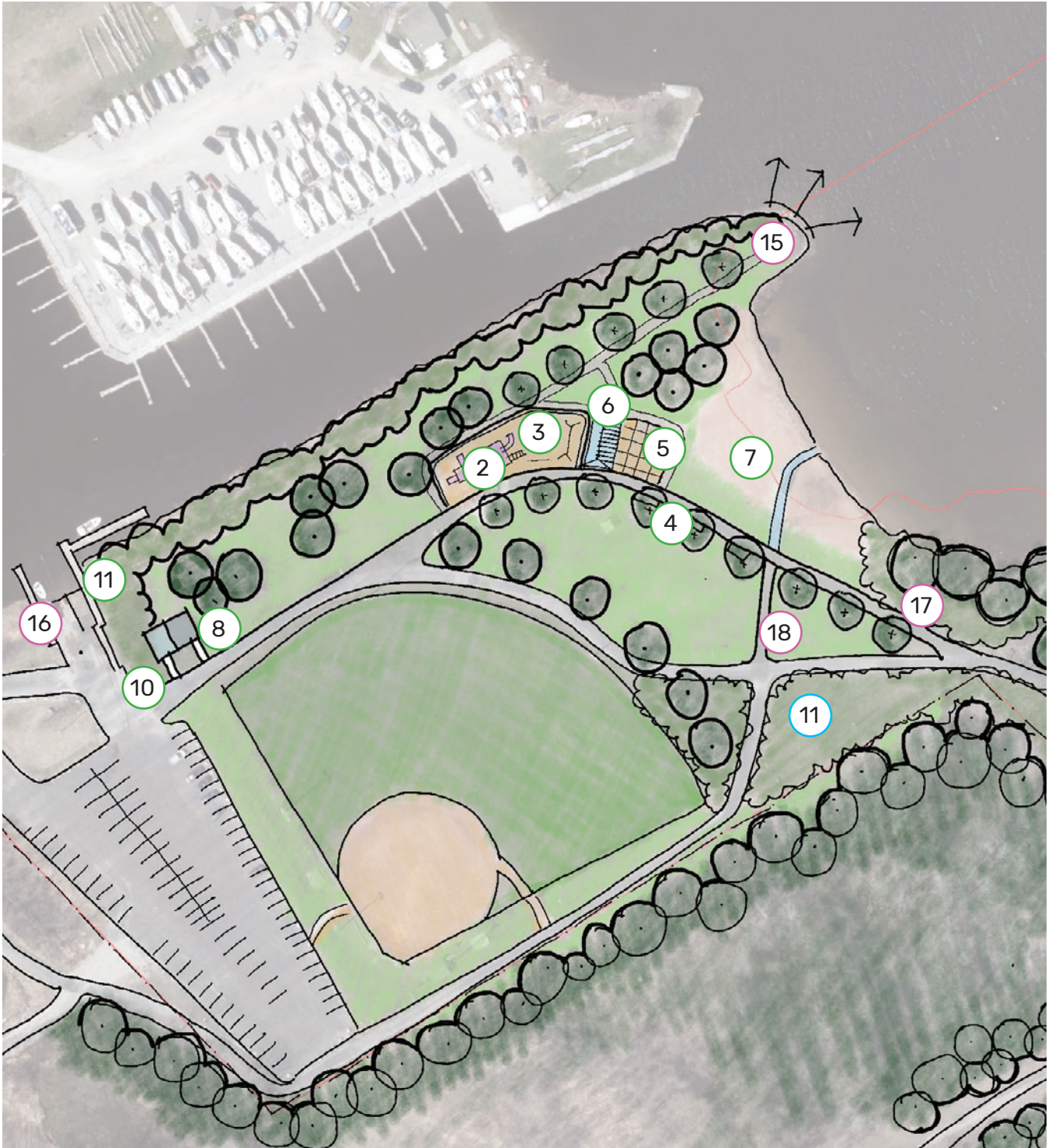


Figure AE.27: Pete Pettersen Park North End Design Concept



Figure AE.28: Pete Petterson Park South End Design Concept

23. TOM MCCULLOUGH PARK

Design Overview

Tom McCullough Park provide a link between Bayport Drive and Gawley Drive. It is most woodlot with a sod areas along the water at the park's south end with benches and picnic tables.

Key recommendations for the park include:

Primary

1. Formalize pathway along water's edge
2. Provide accessible seating
3. Provide accessible picnic tables
4. Shade/picnic structure
5. Add park sign at Bayport Blvd
6. Add park sign at south end trail connection
7. Bike parking

Secondary

8. New tree planting

Tertiary

9. Undertake woodlot management and new tree planting to ensure healthy succession of the woodlot over the long term



Figure AE.29: Tom McCullough Park Design Concept

24. GAWLEY PARK

Design Overview

Except by those in the neighbourhood, Gawley Park is a relatively unknown waterfront park at the end of Gawley Drive. It is linked to Tom McCulloch Park to south by the Rotary Waterfront Trail.

Key recommendations for the park include:

Primary

1. Upgrade playground equipment
2. Replace sand surfacing with accessible engineered wood fiber mulch, with curb edge
3. Provide information sign at beach for receiving emergency assistance
4. Accessible route across beach to water (Mobi mat)
5. Accessible seating
6. Accessible picnic tables
7. Improve pedestrian connection through and within the park
8. Bike parking
9. Provide shade structure

Secondary

10. Introduce more naturalized landscaped areas in place of sod
11. Minor Trailhead (TH 1)

Tertiary

12. Undertake woodlot management and new tree planting to ensure healthy succession of the woodlot over the long term



Figure AE.30: Gawley Park Design Concept

25. GLENBROOK GARDENS

Design Overview

Glenbrook Gardens is a woodlot with access to Georgian Bay. Its access points and pathways are not well defined making it invisible to those unfamiliar with the park.

Key recommendations for the park include:

Primary

1. Formalize park access points
2. Formalize accessible trail through park to water edge
3. Replace bridge
4. Replace seating with accessible benches at beach
5. Provide information sign at beach for receiving emergency assistance

Secondary

None

Tertiary

6. Undertake woodlot management and new tree planting to ensure healthy succession of the woodlot over the long term

Other

7. Given the limited potential for this parcel as park for the broader community, sale of the parcel for development should be considered with revenue put into the parks budget for park improvements for other parks in the neighbourhood.



Figure AE.31: Glenbrook Gardens Design Concept

26. SUNRISE PARK

Design Overview

Improvements to Sunrise park are focused on improved pedestrian access to Georgian Bay.

Key recommendations for the park include:

Primary

1. Improved pedestrian access route into and within the park
2. Accessible picnic tables

Secondary

3. Upgrade wood dock and stairs into water

Tertiary

4. Undertake woodlot management and new tree planting to ensure healthy succession of the woodlot over the long term

Other

5. Given the limited potential for this small parcel as park for the broader community, sale of the parcel for development should be considered with revenue put into the parks budget for park improvements for other parks in the neighbourhood.

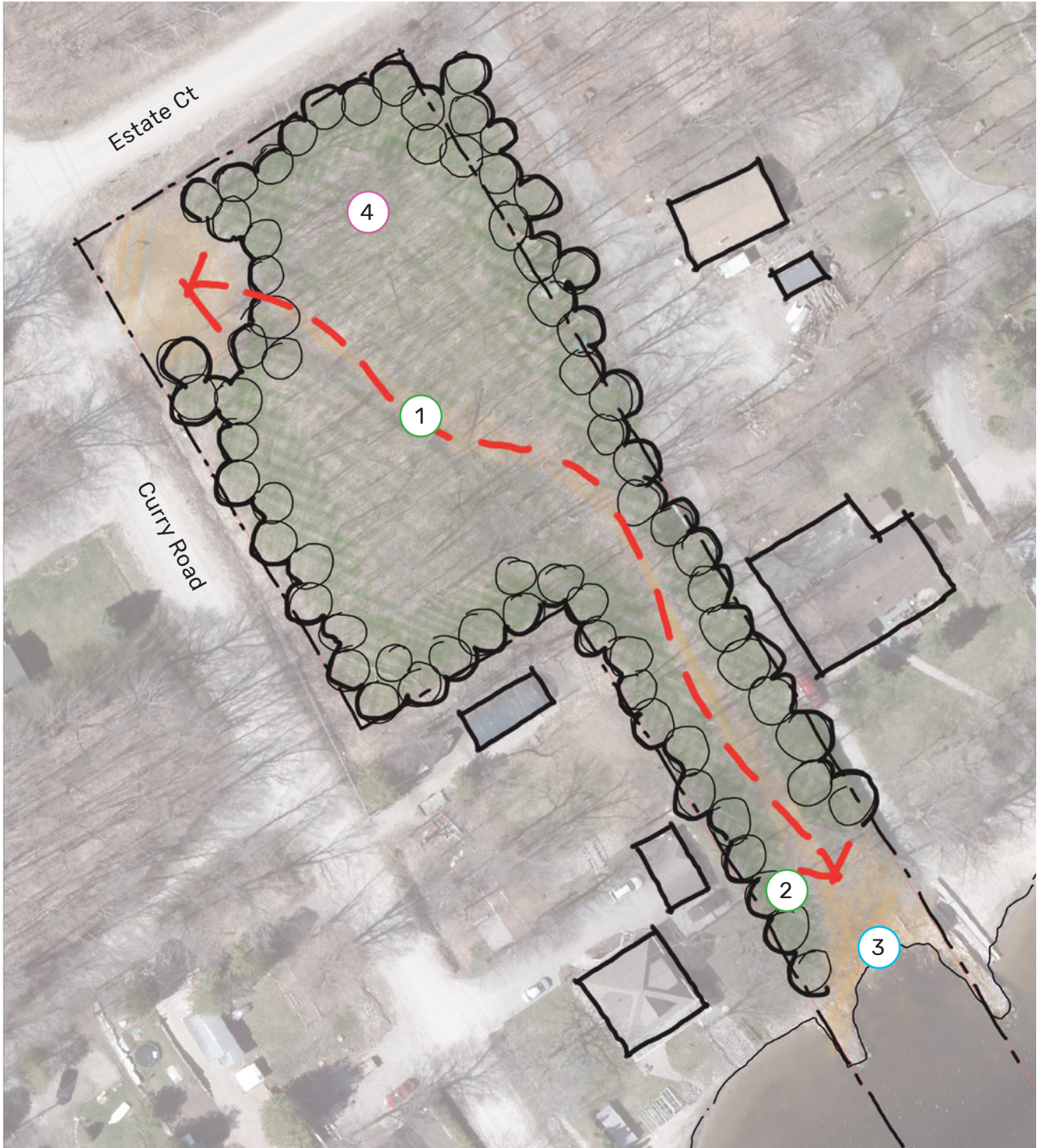


Figure AE.32: Sunrise Park Design Concept